



**Liftomatic Material Handling, Inc.**

700 Dartmouth Lane  
Buffalo Grove, IL 60089

Phone 847 325-2930

Fax 847 325-2959

Toll Free 800 837-6540

# LIFTOMATIC OWNERS MANUAL

## LIFTOMATIC “PARROT-BEAK®” DRUM HANDLING EQUIPMENT

PORTABLE EQUIPMENT MODEL  
SERIES “10-HT-4W” FOR  
HANDLING ONE DRUM AT A TIME

***WARNING: Do not install, operate or service this product unless you have read and understand the safety practices, warnings, and operation and service instructions contained in this manual. Failure to follow these guidelines may result in less than efficient drum handling routines. Please consult Liftomatic if you require additional information or if you have questions. (PH: 800.837.6540 or FAX: 847.325.2959 or email: [info@liftomatic.com](mailto:info@liftomatic.com)). Thank you very much for your business.***

# OPERATING INSTRUCTIONS FOR LIFTOMATIC MODEL 10-HT-4W MANUAL HAND TRUCK

The 10-HT-4W hand truck can only reach peak efficiency through proper use. Please read and follow all instructions carefully. By doing so, it will increase your drum handling productivity. \*\*Note that this hand truck is designed to handle drums only at floor level – it is not designed to take drums on or off of pallets unless using a ramp.

## TO ENGAGE THE DRUM:

- 1) Once the post is bolted into the chassis/wheels, adjust the hand truck so it is positioned parallel with the side-wall of the drum and the cradle at the bottom is actually resting against the drum.
- 2) Adjust the “Parrot-Beak” clamping mechanism (figure #4 on the parts list) so that the lower jaw is positioned slightly higher (approximately 1”) than the top chime of the drum. This up/down motion of the “Parrot-Beak” clamp can be made by pulling the adjustment handle (located at the top of the clamping mechanism) back toward the post (figure #5 on the parts list). By pulling back the adjustment handle, it will release the “Parrot-Beak” clamp allowing it to be moved up and or down the post. This allows for handling taller or shorter drums. When the adjustment handle is released, the “Parrot-Beak” clamp should lock back against the post at that position.
- 3) Place your foot on the foot step (keeping it there during the entire clamping process). Then project the handle and “Parrot-Beak” clamp toward the drum. The operator will need to position the upper and lower jaws of the beak over the top chime of the drum that is to be moved. Once the jaws of the beak are located at the chime the operator can slowly push the chassis (and foot step) in toward the drum. This action will engage the upper and lower jaws. **KEEP YOUR FOOT ON THE FOOT STEP.**
- 4) To break the drum into transport position, the operator will use his/her lower body (and foot – on the foot step) to push the chassis in toward the drum while pulling back on the handle to break the drum over. The combination of using lower body strength while pulling back on the handle will simplify the process for the operator(s). \*\*Once the drum is broken back to the transport position, maintain some downward pressure on the handle during transport.

## TO RELEASE (UPRIGHT) THE DRUM:

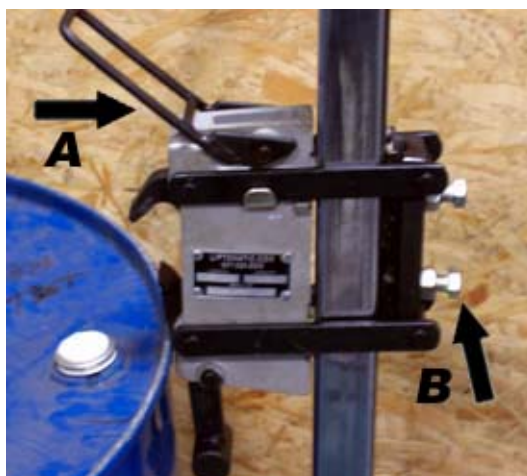
- 1) Place your foot back on the foot step.
- 2) Using the handle, tip the hand truck forward and allow the chassis and foot step to creep back toward the operator. During this entire process, keep your foot on the foot step.
- 3) Once the drum makes contact with the floor, push the hand truck handle forward slightly further and the jaws will disengage (making a clicking sound). Then you can take your foot off the foot step. You can then move the hand truck away from the drum and or repeat the process.

## MAINTENANCE:

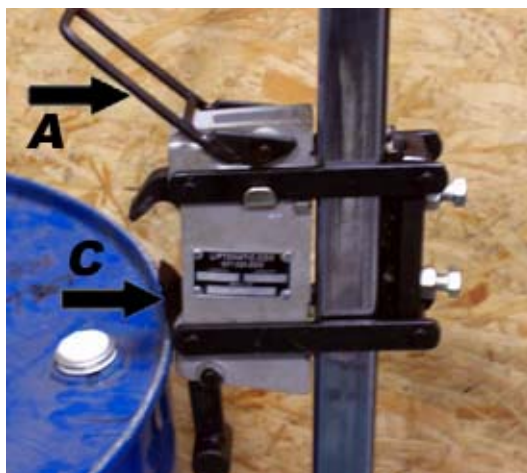
On a monthly basis, grease the front ten inch wheels using the grease (Zirk) fittings. Dirt, dust, and or any foreign materials should be cleaned from the wheels, clamping mechanism, and main post on a regular basis. After cleaning, lubricate the wheels and clamping mechanism with a light grade oil or aerosol spray. Try and avoid lubricant on the main post. To adjust the back friction plate (which holds the clamping mechanism to the post) loosen the locking nuts and then the set screws. Then adjust (hand tight) the set screws and finish by tightening the locking nuts again. Do not over-tighten the screws as this will bind the clamping mechanism to the post. Check the tightness by pressing down on the adjustment handle (located at the top of the “Parrot-Beak” clamp) as discussed in step #2 under “engaging the drum” above. Occasional tightening of the friction plate will be necessary from time to time. If needed, use a wrench to add some additional tightness to the set screws before tightening the lock nuts.

**LIFTOMATIC MODEL 10-HT4W****OPERATING INSTRUCTIONS****1) Setting the clamping mechanism**

First, adjust the nut/bolt arrangement on the back of the hand truck clamp (B) so that when the adjustment handle (A) is pulled toward the post, the clamp slides freely and does not bind.



Second, place the hand truck in the vertical position alongside the drum. Pull the adjustment handle (A) and adjust the clamping mechanism up or down, so that the bottom of the lower jaw on the parrot-beak (C) rests on, or just barely above the top of the drum.



**Liftomatic Material Handling, Inc.**700 Dartmouth Lane  
Buffalo Grove, IL 60089

Phone 847 325-2930

Fax 847 325-2959

Toll Free 800 837-6540

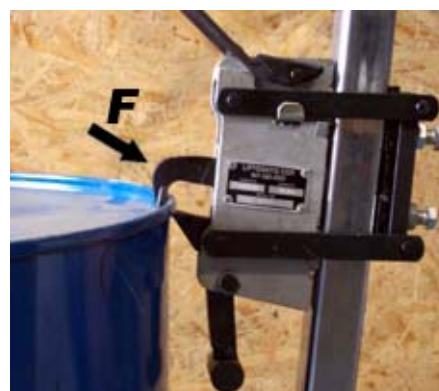
**2) Clamping the drum for pick-up and transport**

Place your foot on the foot-post (D) and your hands on the handle bars of the unit. Push your hands forward, allowing the wheels to roll back towards you, while keeping your foot on the post.



(NOTE- Keep the clamping mechanism from contacting the drum at this point or the clamping mechanism will slide out of position on the post) . Keep your foot on the foot-post!

With the housing tilted forward in this position, push the housing up against the drum, with the lower jaw (E), directly underneath the drum's top edge or chime.



With the lower jaw under the drum chime or edge, maintain contact with the drum and push your foot forward until the cradle and wheels of the hand truck are back in the vertical position alongside the drum. The upper jaw (F) will now lock automatically, closing over the top chime of the drum.



## Liftomatic Material Handling, Inc.

700 Dartmouth Lane  
Buffalo Grove, IL 60089

Phone 847 325-2930  
Fax 847 325-2959  
Toll Free 800 837-6540

Now by using both upper and lower body (pull your hands back and push “out” with your foot on the foot-post), the drum can be broken over for transport.



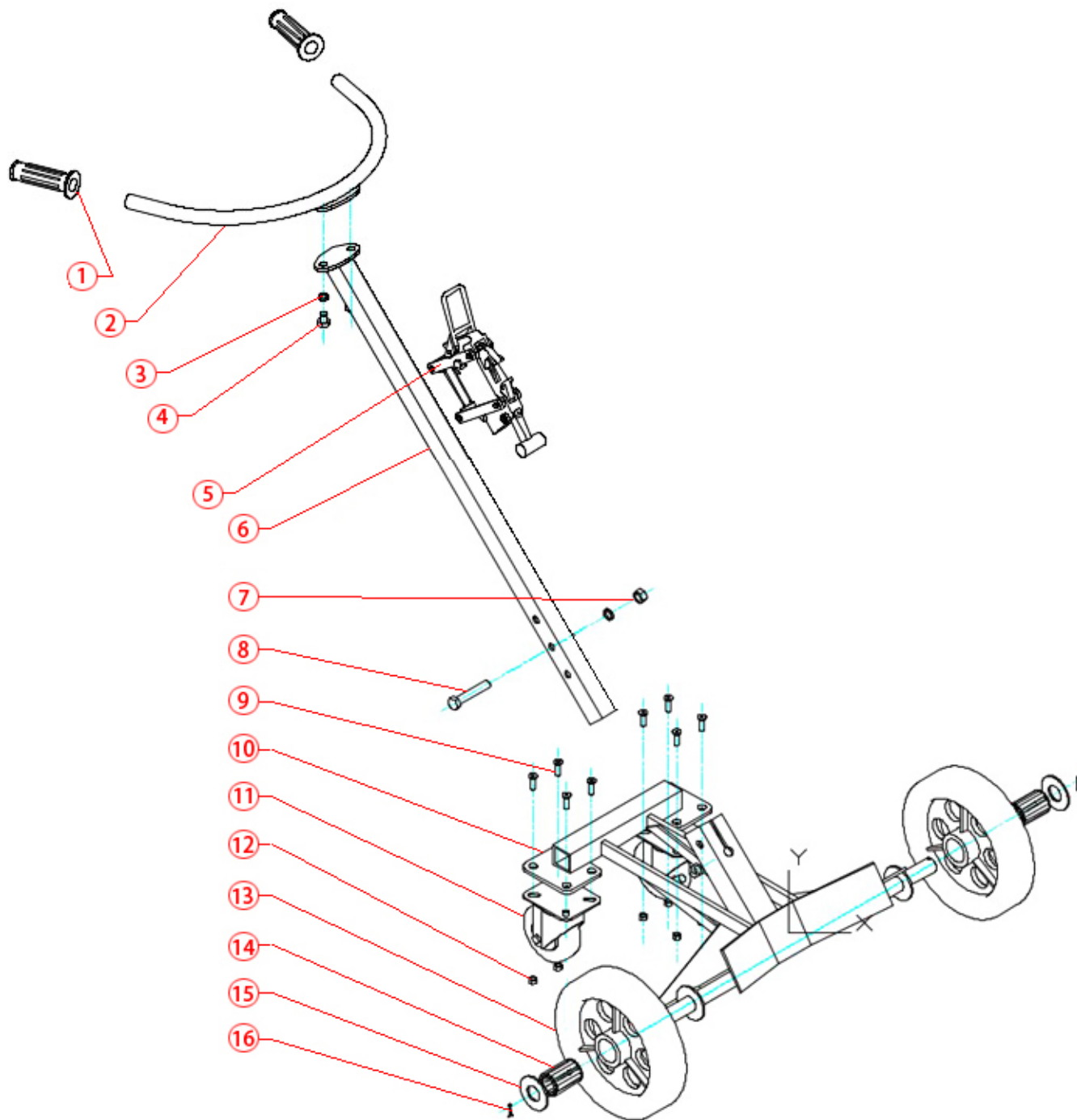
To release the drum, set the drum down in the vertical position and let the wheels roll back toward you as in step # 2 above. The clamping mechanism will automatically release the drum.

**REMEMBER TO KEEP YOUR FOOT ON THE POST AT ALL TIMES WHEN ENGAGING AND DIS-ENGAGING THE DRUM!**

For additional information, please contact Liftomatic Technical Services at:

700 Dartmouth Lane  
Buffalo Grove, IL 60089  
Toll-Free: 800-837-6540  
Local : 847-325-2930  
Fax : 847-325-2959  
Email: [info@liftomatic.com](mailto:info@liftomatic.com)  
Web : [www.liftomatic.com](http://www.liftomatic.com)

10HT4WOPS/05  
TPB/WS © 2005, LMH, INC.



**SCHEMATIC for 10HT-4W DRUM HAND TRUCK**



**Liftomatic Material Handling, Inc.**

700 Dartmouth Lane  
Buffalo Grove, IL 60089

Phone 847 325-2930  
Fax 847 325-2959  
Toll Free 800 837-6540

**PART LIST for 10HT-4W DRUM HAND TRUCK**

<b>No.</b>	<b>Part Number</b>	<b>Quantity</b>	<b>Description</b>
1	6995	2	HANDLE GRIP
2	2161	1	HANDLE
3	6078	3	LOCK WASHER
4	6142M	3	CAP SCREW
5	4015	1	CLAMPING ASSEMBLY
6	2162	1	POST
7	6322	2	HEX NUT
8	6144-M	1	BOLT
9	6145-M	8	SCREW, CASTER
10	2034	1	CHASSIS
11	6171	2	SWIVEL CASTER
12	6095	8	LOCK NUT
13	6161	2	FRONT WHEEL
14	6162	2	BEARING
15	6071	2	FLAT WASHER
16	6061	2	COTTER PIN